



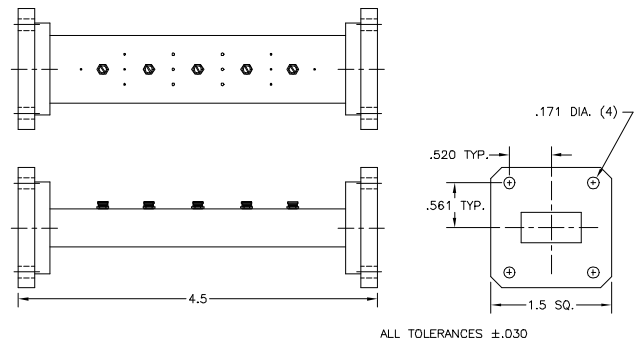
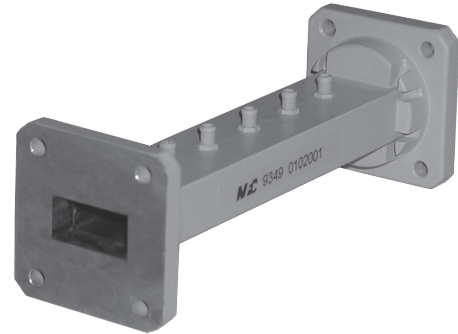
# Ku-Band Multi-Purpose Receive Filter

## Model 9349

This downlink filter not only provides isolation from the uplink band (14-14.5 GHz) but also suppresses potential interference from frequencies located below the receive band.

### Specifications:

Passband:	11.7 - 12.2 GHz
Insertion Loss:	0.25 dB Typ
VSWR:	1.25:1 Max
Reject Bands:	14.0 - 14.5 GHz 10.55 - 10.68 GHz
Rejection:	55 dB Typ 14.0-14.5 GHz 60 dB Typ 10.55-10.68 GHz
Power:	1 Watt
Flanges:	WR75 Cover
Weight:	0.4 lbs (0.2 Kg)
Dimensions:	4.5" x 1.5" x 1.5" (114mm x 38mm x 38mm)
Finish:	Gray Lacquer



**MICROWAVE FILTER CO., INC.**  
6743 KINNE STREET, E. SYRACUSE, NY 13057  
E-Mail: [mfcsales@microwavefilter.com](mailto:mfcsales@microwavefilter.com)

800-448-1666 • 315-438-4700  
Web: [www.microwavefilter.com](http://www.microwavefilter.com)