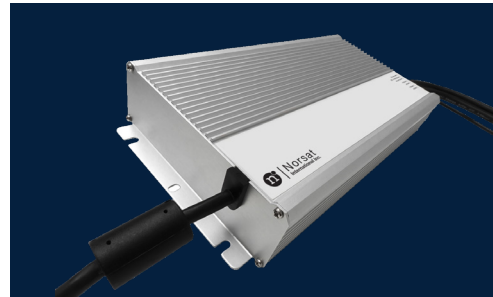




MICROWAVE COMPONENT

480W AC/DC OUTDOOR POWER SUPPLY SPECIFICATIONS



Electrical Specifications

Input Voltage	90 ~ 300 VAC
Input Frequency	47 ~ 63 Hz
Rated Current	10 A
Output Power	480W
Output Voltage	+48V
Output Voltage Accuracy	±5 % of output voltage
Output Voltage Ripple & Noise	1.0V Peak-to-Peak

Environmental Specifications

Operating Temperature	-35 to +70°C
-----------------------	--------------

Storage Temperature	-40 to +85°C
---------------------	--------------

Mechanical Specifications

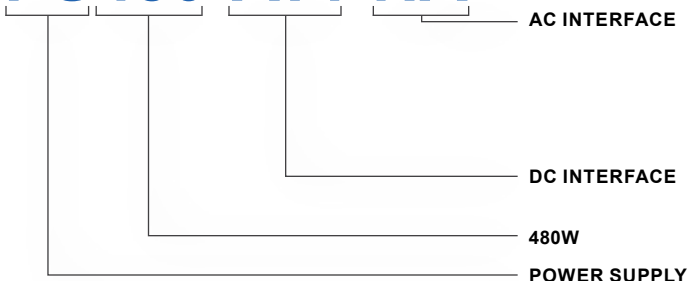
AC Input Interface	Plug:	200 in (5 m) cable
		NA NEMA 5/15
		UK BS 1363
		EU CEE 7/7
		AU AS/NZS 3112
		IEC 60320 C14
		CN Type I
DC Output Cable (2m)		78 in (2 m) cable Socket reference: PT06E-12-4S-476
Dimensions		262 mm x 125 mm x 43.8 mm (10.30 in x 4.92 in x 1.72 in)
Weight		2.8 kg (6.17 lb)
Color		Silver
Cooling		Passive / Fanless

APPLICATIONS

- Provide DC power for Norsat ATOM BUC & SSPA
- Rugged extruded aluminum chassis
- Environmentally sealed and moisture resistant (IP67)
- Certifications: CE, EN61000-6-2, EN61000-6-3

HOW TO ORDER

PS480-AT1-NA



NA = North America
UK = United Kingdom
EU = Europe
AU = Australia
IEC = IEC
CN = China
 PT06E-12-4S(SR) DC out

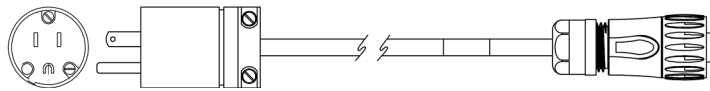


ACCESSORY OPTIONS

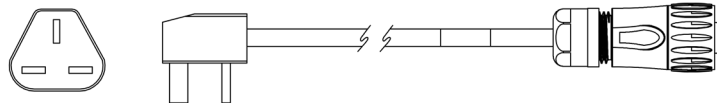
ADDITIONAL	AC POWER CORD 30cm (12 in)
NA Plug	ACPC-ATPS-NA
UK Plug	ACPC-ATPS-UK
EU Plug	ACPC-ATPS-EU
AU Plug	ACPC-ATPS-AU
IEC Plug	ACPC-ATPS-IEC
CN Plug	ACPC-ATPS-CN

MECHANICAL DIAGRAM

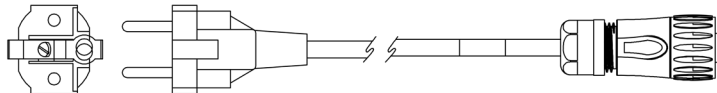
NA Plug



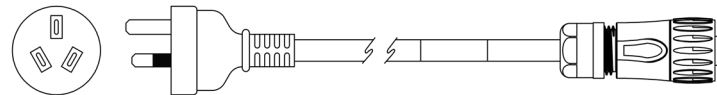
UK Plug



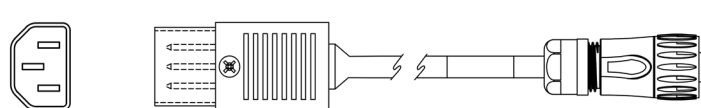
EU Plug



AU Plug



IEC Plug



CN Plug

