

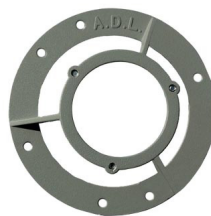
Ku Band Prime Focus Feeds

- Prime Focus Dual Polarity Ku Band Feeds
- For Use with New Antennas or Upgrading Existing Antennas in the Field
- Optional Mounting Ring (ADL-OP120MR) Allows for Universal Mounting



ADL-KU920/C

Specifications		
	FEED-ADL-KU920	FEED-ADL-KU920C
Polarity	Dual	Dual
Polarization	Linear	CP
Frequency Range	10.7 - 12.75 GHz	10.7 - 12.75 GHz
f/D Range	.335 - .425	.335 - .425
VSWR	1.5:1	1.5:1
Polarization Isolation	35 dB (Typ.)	17.7 dB (Typ.)
Rotation	360°	360°
Temperature Range	-40° C - +60° C	-40° C - +60° C



ADL-OP120MR