

Waveguide to Coaxial - Type "N" Adapters



1.70 - 22.00 GHz Performance Frequency
 1.25 Typical Max VSWR (VSWR varies with design)
 Male or Female Connectors available
 Numerous Flange Configurations available
 Aluminum (6061) or Copper WR Waveguide Available

Advanced Microwave Components offers an array of waveguide to coaxial adapters. The waveguide sizes range from WR-62 to as large as WR-430. AMC also uses male and female connectors for their interface connections. AMC offers special unit design upon customer request. All AMC components are produced with the highest quality available. We insure our quality with an ISO9001 / AS9100 Quality System. All AMC Adapters are painted flat black, but we offer additional upgrades on paint.

WAVEGUIDE FLANGES:
A = AMC QUICK DISCONNECT (MALE) PATENT PROTECTED
B = AMC QUICK DISCONNECT (FEMALE) PATENT PROTECTED
C = CPR STYLE GROOVED (ALL CLEAR HOLES)
D = CPR STYLE GROOVED (ALL TAP HOLES)
E = CPR STYLE FLAT (ALL TAP HOLES)
F = CPR STYLE FLAT (CLEAR HOLES)
G = CPR STYLE CONTACT (CLEAR HOLES)
H = CPR STYLE CONTACT (ALL TAP HOLES)
I = CMR (CLEAR HOLES)
J = CMR (ALT/ TAP,/CLEAR HOLES)
K = CMR (ALL TAP HOLES)
L = UG COVER (CLEAR HOLES)

M = UG COVER (ALL TAP HOLES)
N = UG COVER GROOVED (ALL CLEAR HOLES)
O = UG CHOKE (CLEAR HOLES)
P = UG CHOKE (ALL TAP HOLES)
Q = UG COVER GROOVED (ALL TAP HOLES)
R = UBR
S = PBR
T = CBR
U = UDR
V = PDR
W = CDR
X = SPECIAL FLANGES (CUSTOMER TO SPECIFY)

SAMPLE P/N: AMCN75LB

MODEL NO:	W/G SIZE	FLANGE TYPE	MATERIAL A=Alum. B=Brsass
AMC-N	75	L	B

The above referenced part number describes the following Item: WR 75 waveguide to coaxial adapter type "Type N" With a cover flange in brass. All connectors are female Unless specified.

WAVEGUIDE FLANGES:
A = AMC QUICK DISCONNECT (MALE) PATENT PROTECTED
B = AMC QUICK DISCONNECT (FEMALE) PATENT PROTECTED
C = CPR STYLE GROOVED (ALL CLEAR HOLES)
D = CPR STYLE GROOVED (ALL TAP HOLES)
E = CPR STYLE FLAT (ALL TAP HOLES)
F = CPR STYLE FLAT (CLEAR HOLES)
G = CPR STYLE CONTACT (CLEAR HOLES)
H = CPR STYLE CONTACT (ALL TAP HOLES)
I = CMR (CLEAR HOLES)

1815 Turnberry Lane Atlanta, GA 30005 USA Phone: (770) 757 1767 Fax: (770) 754 4547

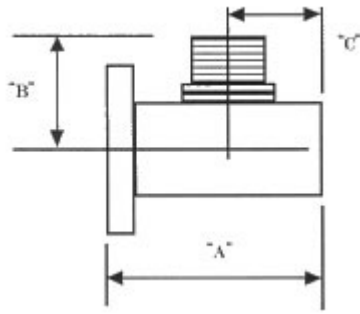
Website: <http://www.servsat.com>

J = CMR (ALT/ TAP,/CLEAR HOLES)
K = CMR (ALL TAP HOLES)
L = UG COVER (CLEAR HOLES)
M = UG COVER (ALL TAP HOLES)
N = UG COVER GROOVED (ALL CLEAR HOLES)
O = UG CHOKE (CLEAR HOLES)
P = UG CHOKE (ALL TAP HOLES)
Q = UG COVER GROOVED (ALL TAP HOLES)
R = UBR
S = PBR
T = CBR
U = UDR
V = PDR
W = CDR
X = SPECIAL FLANGES (CUSTOMER TO SPECIFY)

SAMPLE P/N: AMCN75LB

MODEL NO:	W/G SIZE	FLANGE TYPE	MATERIAL A=Alum. B=Brass
AMC-N	75	L	B

The above referenced part number describes the following Item: WR 75 waveguide to coaxial adapter type "Type N" With a cover flange in brass. All connectors are female Unless specified.



WR SIZE	FREQ. GHZ	DIM. A	DIM. B	DIM. C
62	12.4 - 18.0	1.75	1.25	0.50
75	10.0 - 15.0	1.50	1.10	0.50
90	8.20 - 12.4	1.63	1.10	0.50
102	7.00 - 11.0	1.40	1.08	0.50
112	7.05 - 10.0	1.76	1.17	0.51
137	5.85 - 8.20	1.81	1.28	0.56
159	4.90 - 7.05	2.00	1.32	0.50
187	3.95 - 5.85	2.25	1.36	0.70
229	3.30 - 4.90	2.26	1.37	0.76
284	2.60 - 3.95	2.72	2.19	0.85
430	1.70 - 2.60	4.80	2.25	1.75

AMC CONNECTOR CODES:

N = TYPE N COAX CONN.-FEMALE

NM = TYPE N COAX. CONN.-MALE.

S = TYPE SMA COAX. CONN.-FEMALE.

SM = TYPE SMA COAX. CONN.-MALE.

NOTE: TYPE N AND S ARE STANDARD

Note: All AMC models include an iridite/ corrosion Protection treatment, painted flat black, flanges are unplated, Iridited and polished. For other flange finishes, material or Paint color requirements, please specify

1815 Turnberry Lane Atlanta, GA 30005 USA Phone: (770) 757 1767 Fax: (770) 754 4547

Website: <http://www.servsat.com>