

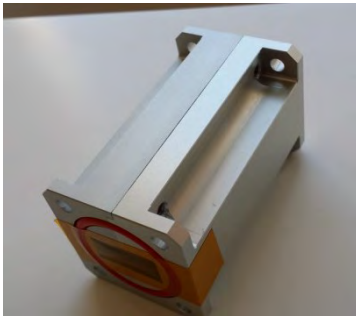
RQT Ku band TRF V1

Ku band transmit reject filter

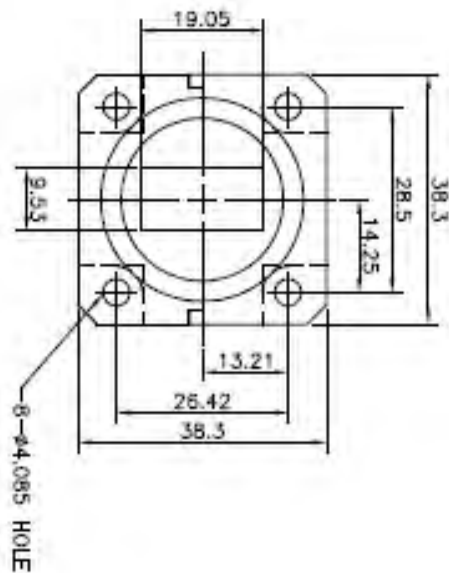
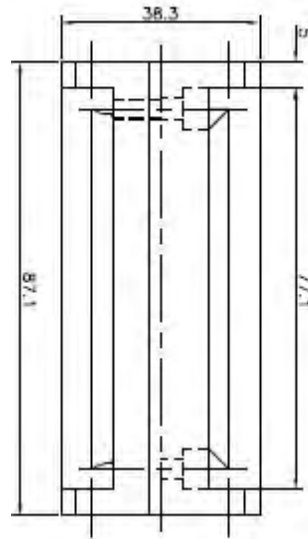
RQT-KuTRF-V1 Transmit reject filter For Ku band operation.

This filter manufacturing is thoroughly tested and proves high quality and excellent product finish.

This compact and robust construction has been a popular design within the satellite communication industry.



Drawings (mm)



Technical specifications

Parameters	Values
Pass band	10.75 – 12.25 GHz
Reject band	13.75-14.5 GHz
Insertion loss pass band	< 0.1 dB
Return loss pass band	22 dB
Rejection	80 dB
Flange	WR75, grooved with gasket
Hole size	M4
Length	87.1 mm

