



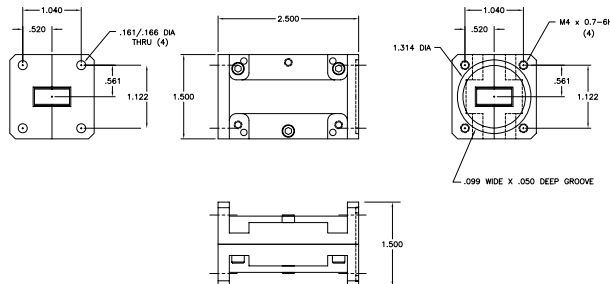
Ku-Band Transmit Reject Filter

Model 16522

Designed for full Ku-Band downlink reception and uplink suppression. This versatile filter is ideal for VSAT applications around the world.

Specifications:

Passband:	10.70 - 12.75 GHz
Insertion Loss:	0.1 dB Max
VSWR:	1.20:1 Max
Reject Band:	13.75 - 14.50 GHz
Rejection:	70 dB Min
Operating Temperature:	-55°C TO +70°C
Flanges:	WR75 Cover WR75 Grooved



Authorized Distributor:
Servsat Communications, Inc. ATLANTA, GA 3005
E-Mail: sales@servsat.com

770-754-4547 •
Web: www.servsat.com